

CONCEPT SPACE SMALL BATHROOM SOLUTIONS



iSideal
STANDARD

A
BEAUTIFUL
USE
OF
SPACE



A BEAUTIFUL USE OF SPACE

At Ideal Standard, we believe bathrooms should be living places not just functional spaces. For us, they're far more than just places to brush your teeth. They should be places to relax, to make yourself beautiful, to refresh and re-energise.

So, for the past 100 years we have been designing products to help you create your ideal bathroom.

Whether that is a place to escape, a boudoir, a playroom or a sanctuary, it is always a beautiful use of space.

For further inspiration visit [IdealStandard.com](https://www.idealstandard.com)

Big thinking for small spaces	02
Concept Space solutions	06
Product options	16
Basins	18
WCs	20
Baths	22
Furniture	24
Technical specifications	30



Concept Space 80cm furniture or pedestal basin; corner wc; Simplicity 80cm shower tray; Kubo 80cm shower enclosure. Concept Space 80cm basin unit; tall column unit (Dark Walnut finish). Concept 800mm mirror, 600mm towel rail; toilet roll holder with cover, glass toothbrush holder. Concept blue basin mixer, Easybox Slim thermostatic shower mixer with square faceplate; Idealrain M3 shower kit.

Space is the ultimate luxury. Space to live, to relax or just be by ourselves. No matter how much we have it never seems enough and this is doubly true in the bathroom. **Concept Space** is designed to help you get more out of your bathroom. So whether you need more elbow room, clever storage or an ensuite to ease the morning rush, the Concept range introduces a range of compact solutions.



SLIMMER
DESIGNS
FOR MORE
ROOM TO
MANOEUVRE



Slim basins and compact wcs shave precious centimetres off the projection which makes a big impact on user comfort in small or awkward spaces.



In this cosy ensuite a standard wc wouldn't give enough leg room but the Concept Space corner wc turns into the centre and increases wall space for a tall storage unit. A generous 80cm basin tucks into the opposite corner and its short projection of 380mm means there's still plenty of room to use all the facilities without feeling cramped.



Concept Space basin units have one sleek drawer front but hidden inside there's a deep drawer for fresh towels and a second drawer for grooming accessories.



PLAN MORE BATHROOM IN THE SAME SPACE

Concept Space features:

1. Short projection Cube, Sphere and Arc basins
2. Compact and corner wcs
3. Basins which fit into corners
4. A spacemaker bath and square shower bath
5. Intelligent, space-maximising storage ideas
6. Fully compatible with the full Concept range (see page 41)



Left and right hand basins are designed to sit right into a corner making use of every inch of space. Concept Space 60cm furniture or pedestal basin with left hand platform, shown with semi pedestal.



Short projection Concept Space furniture or pedestal basins can be used wall hung, with a pedestal, semi-pedestal or dedicated basin unit. Concept Space 70cm furniture or pedestal basin with left hand platform and basin unit in Elm finish.

Concept Space builds on space saving pieces in the existing Concept range which can now be combined with the new products for more planning opportunities. Concept Cube 55cm short projection basin.



The Concept Blue basin mixer features new technology that helps save water and reduce energy costs. It's the perfect complement to Cube, Arc and Sphere basin shapes.



Concept Space furniture is now available in six finishes and can be configured in freestyle or fitted combinations for you to create your own bespoke look. The Concept Space wc unit is left or right handed to give you more space when used against a wall and includes a handy storage compartment.



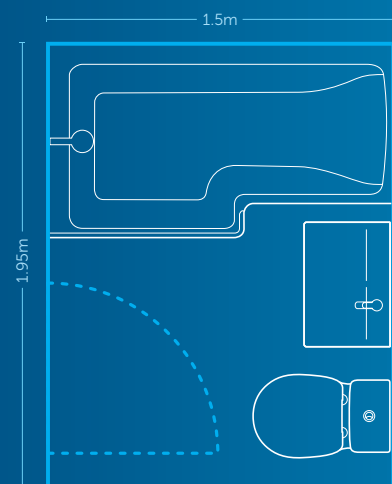
The Concept Space Guest furniture basin solution includes under basin storage and add on units.



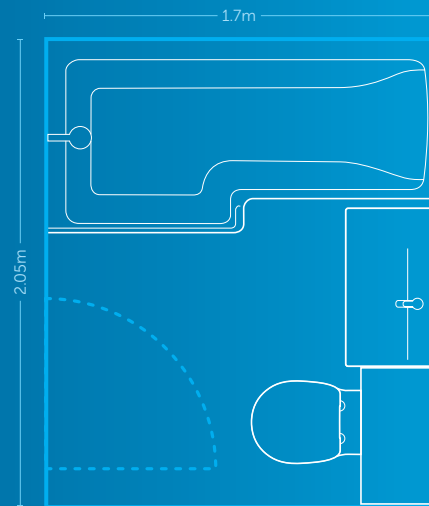
SMARTER SPACE

The average family bathroom in the UK is about the same size as a king size bed. This one room needs to provide an invigorating shower for dad, bath time for the kids and a sanctuary for mum. Using Concept Space products every spare inch has been utilised to meet everyone's demands without feeling cramped or compromising on style.

The next few pages show some typical plans which are designed to get you re-thinking your own space...



When space is really tight the 150cm square shower bath combines a full size showering area with a shorter bath.



With a wider room there's space for the bigger 170cm square shower bath and a larger basin. The basin and wc unit are handed to push the user into the middle of the room and there's storage for the whole family in the basin unit and above the wc.

Concept Space 70cm furniture or pedestal basin with left hand platform; compact back-to-wall wc; 170cm square shower bath (left hand) with front panel and screen. Concept Space 700mm basin unit (left hand); 600mm wc unit with right hand storage; 600 x 300mm worktop; 600mm fill-in unit, 600mm wall unit (Gloss White finish). Concept 600mm towel rail; toilet roll holder with cover; metal soap dispenser. Concept Blue basin mixer; bath shower mixer.

EN-SUITE? EXTEND, CONVERT, REPLAN

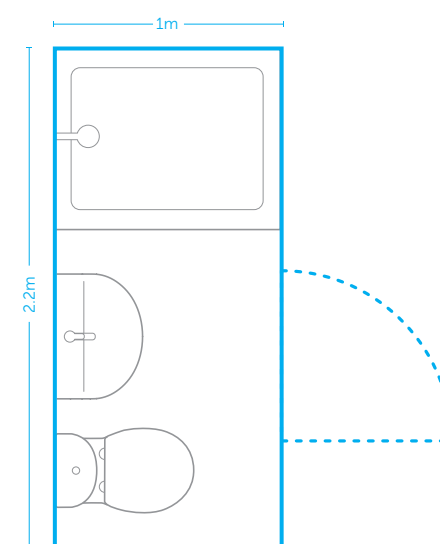


If you've discounted the luxury of a private en-suite through lack of space these pages might make you think again. **Concept Space** is designed to maximise existing space and help you achieve the impossible.



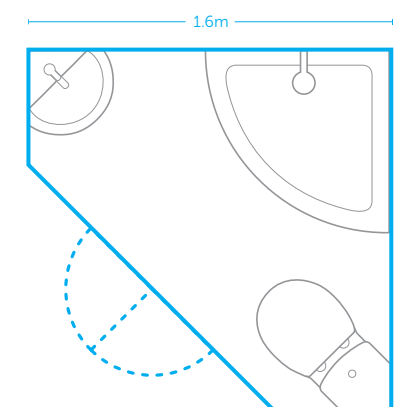
This en-suite is the width of a one metre shower enclosure. Under normal circumstances the basin and wc would take up too much space to allow a person to use these facilities comfortably. Concept Space short projection products provide just enough extra leg room and space to dry off – making showering a pleasure.

Concept Space Arc 55cm short projection basin; compact close coupled wc with Arc cistern; Simplicity Low Profile 100 x 80cm shower tray; Kubo 1000 slider door. Concept 500mm mirror; towel ring; soap dish; toilet brush. Concept Blue basin mixer; Easybox Slim thermostatic shower mixer with round faceplate; Idealrain M3 shower kit.



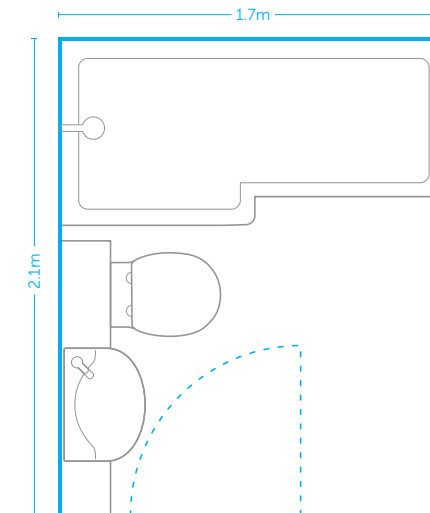
This corner en-suite solution fits snugly into a larger bedroom. Fitted wardrobes can be installed up to the side walls to create a minimal contemporary look.

Concept Arc 45cm corner basin; Concept Space corner wc; Simplicity Low Profile 80cm quadrant shower tray; Kubo 80cm quadrant shower enclosure. Concept corner basin unit (Gloss White finish). Concept towel ring; toilet roll holder. Ceramix Blue basin mixer; Ceratherm 100 thermostatic exposed shower valve; Idealrain M3 shower kit.



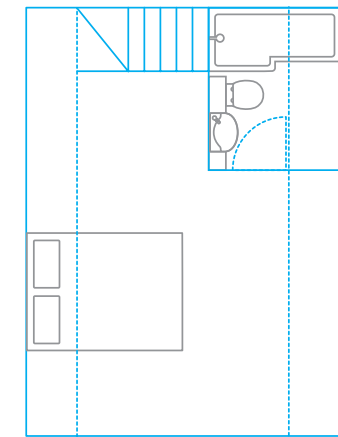


Concept Space Arc 55cm short projection basin; compact wall hung wc; 170cm square shower bath, left hand, and screen. Concept slimline 500mm wc unit; 500mm semi-countertop basin unit; 200mm base unit; 500 and 200mm wall units; 1200mm worktop; square shower bath furniture panel (Gloss Grey finish). 500mm mirror; 600mm towel rail. Concept Blue basin mixer; Easybox Slim thermostatic bath shower mixer with square faceplate; Idealrain M3 shower kit, Moments swivel spout bath filler.



Loft conversions have reduced head height in the sloping roof. The use of short projection products and slimline furniture in this ensuite bathroom maximises the amount of floorspace available with full height.

Square shower bath furniture panels are available to match all six furniture finishes.



NEED MORE SPACE? MOVE UP NOT OUT

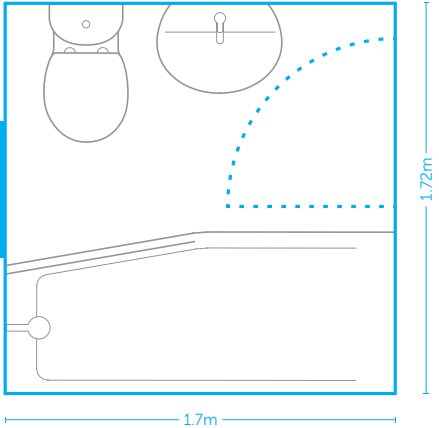
If you're bursting at the seams extending upwards or outwards can be a great way of adding another bedroom, extra bathroom facilities and property value. Planning with **Concept Space** products can help to maximise the use of your extra space without compromising on style.



The narrow Concept Space 200mm wide base and wall units help you configure more combinations to fit your space.



The square shower bath screen features a return panel to deflect water and prevent splashes. In this example there are no fittings on the bath rim; water is diverted to the bath or shower through the Easybox Slim thermostatic valve. The Moments wall mounted spout swivels out of the way when the screen folds back.



SHAPED TO FIT

Bathrooms have evolved to suit our modern lifestyle – but many have awkwardly positioned windows and doors that mean that standard products don’t fit neatly. The **Concept Space** range includes the Spacemaker bath which tapers to fit around problems areas.

➤ This typical bathroom has a window in the centre of the outside wall which restricts over bath showering. The Spacemaker bath tapers to clear the window and provides extra leg space for the wc. The plan also shows how the short projection basin allows clearance for the door swing.



➤ The Idealfill bath filler delivers water through the combined filler and overflow. Idealfill allows you to choose where to position your fittings, independently of the filler, on or around the bath or on the wall. In this case the water is controlled through the Easybox Slim bath shower mixer.



➤ The Easybox Slim thermostatic bath shower mixer fits into a 43mm wall cavity and is designed for easy installation. Available as both a shower valve and bath shower mixer and with a choice of round or square faceplate.



Concept Space Sphere 55cm short projection basin; compact close coupled wc with Arc cistern; 170cm spacemaker bath, right hand, Connect angle bath screen. Concept 500mm mirror; 450mm towel rail; 500mm glass shelf, soap dish; toilet roll holder with cover. Concept Blue basin mixer; Idealfill bath filler; Easybox Slim thermostatic bath shower mixer with square faceplate; Idealrain M3 shower kit.

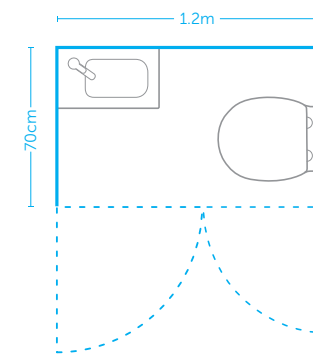
HIDDEN SPACES

The **Concept Space** guest solution is a modular basin storage system designed specifically for the smallest room in the house. Behind its smart good looks hides a bit of design ingenuity.



A downstairs cloakroom for visitors is a real advantage in most homes – but where to put it? Using Concept Space products it's possible to fit a small, practical cloakroom under the stairs.

Concept Space guest furniture basin with left hand platform; compact wall hung wc. Concept Space wall hung guest basin unit, left hand (American Oak finish). Concept 400mm mirror; toilet roll holder with cover, ceramic soap dispenser, towel ring. Concept Blue basin mixer.



If you've more wall space a 200 or 300mm add-on unit is available for the guest basin unit to create a contemporary linear look. Glass tops are available in grey, brown or white.

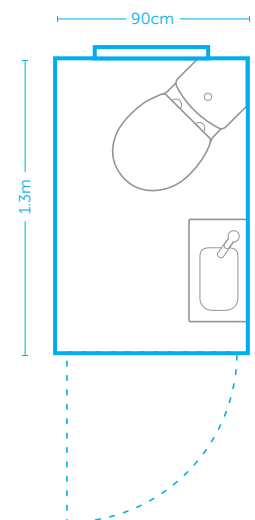


The L shaped door of the guest basin unit reduces the projection on the door swing when open. The door also includes an internal storage box for easy to reach items.



The combination of a corner wc and floorstanding guest basin unit creates this stylish cloakroom within a very small footprint.

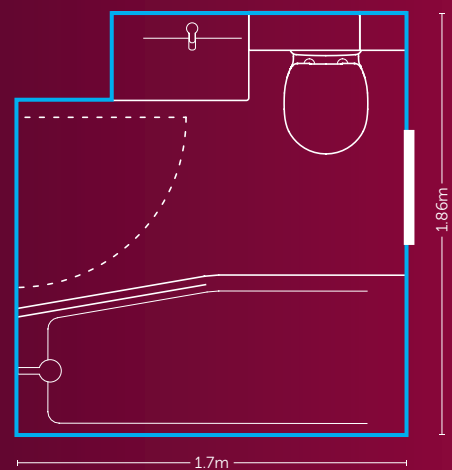
Concept Space guest furniture basin, left hand platform; corner wc. Concept Space floorstanding guest basin unit, left hand (gloss white finish). Concept 400mm mirror; toilet roll holder with cover, metal soap dispenser. Concept Blue basin mixer.



CONCEPT SPACE RANGE

SLIMMER,
BY DESIGN

Because everyone's space is different **Concept** was designed by Robin Leven to provide huge flexibility and choice. **Concept Space** is the natural development of that idea and adds another dimension to the Concept range. These products don't just solve space problems – they help you achieve the bathroom design you want.



In this compact bathroom every product has a part to play. The spacemaker bath is angled to allow for the door to open. The basin is left handed so it can sit snug into the corner and its short projection creates enough space for the user to step back and open the drawer. The compact wc opens up the small space and makes it feel less cramped.



Concept Space 60cm furniture or pedestal basin with left hand platform; compact close coupled back-to-wall wc; spacemaker bath, left hand. Concept Space 600mm wall hung basin unit; 200mm wall unit, 500mm fill in unit, 500mm top box (Gloss Walnut finish). Concept 500mm mirror with anti steam system, glass soap dish, toilet brush. Concept Blue basin mixer.

CONCEPT SPACE SAVING BASINS

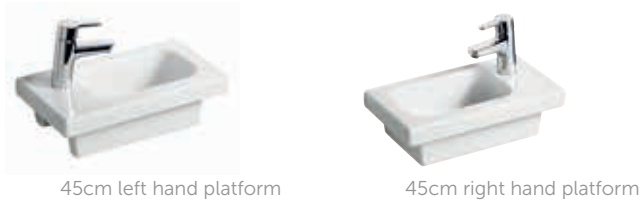
Concept Space furniture or pedestal basins

Concept Space furniture pedestal basins can be used with a full pedestal, a semi-pedestal, wall hung or with a Concept Space wall hung basin unit.



Concept Space guest furniture basins

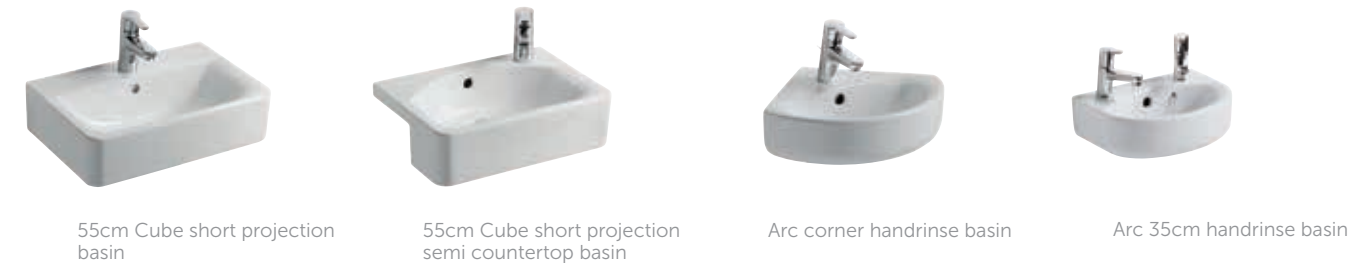
Concept Space 45 x 25cm guest furniture basins can only be used with wall hung or floorstanding guest basin units.



Concept Space Sphere and Arc basins



Concept basins



Concept Space Arc 55cm semi-countertop basin in Elm fitted furniture.



Concept Space 60cm furniture or pedestal with left hand platform and basin unit in Gloss Walnut.



Concept Space 55cm furniture or pedestal basin with full pedestal.

Concept Space Sphere 55cm short projection basin with semi-pedestal.



CONCEPT SPACE WCs & BIDETS

A range of Concept Space compact wcs

Concept Space WCs all have shorter projection that is 6cm less than standard Concept WCs.



Corner wc



Close coupled wc, Cube cistern



Close coupled wc, Arc cistern



Close coupled back-to-wall wc, Cube cistern



Close coupled back-to-wall wc, Arc cistern



Back-to-wall wc



Wall hung wc



Floor standing bidet



Wall hung bidet



Concept Space guest furniture basin with left hand platform; corner wc. Concept Space wall hung guest basin unit, left hand (Gloss Grey finish). Concept 400mm mirror; towel ring; metal soap dispenser; toilet roll holder with cover. Concept Blue basin mixer.



CONCEPT SPACE SAVING BATHS

Concept square shower bath

- The design combines a contemporary square aesthetic with an ergonomically curved internal back rest for comfort.
- The showering area is a generous 85cm deep.
- The design allows maximum flexibility for the positioning of brassware. Rim mounted fittings can be placed at the end of the bath or along the back for double ended bathing (see below). A solution with no rim fittings is the Easybox Slim thermostatic bath shower valve combined with Idealfill or a wall mounted spout (see pages 10 and 12).
- The square shower bath screen features a return panel to deflect water back into the showering area. It opens both inwards and outwards for access and cleaning and incorporates a handy towel rail.
- The baths are available in Idealform or Idealform Plus+ which has double the reinforcement and a unique leg set for increased rigidity and strength.
- There is a choice of acrylic bath panels or wooden panels to match all 6 Concept furniture finishes.
- Available left or right handed.



170cm square shower bath, left hand
170cm square shower bath front panel in Elm, left hand

150cm square shower bath, left hand
150cm square shower bath front panel

Concept spacemaker bath

- The innovative design combines a contemporary angular shape with an ergonomically curved internal back rest for comfort.
- The spacemaker bath narrows to 55cm at the tap end to accommodate awkward bathroom shapes and obstructive windows or door swings.
- Available left right or right hand.



170cm spacemaker bath, left hand



The spacemaker bath is a great solution for awkward spaces. In this room a standard bath would overlap the door but the spacemaker bath narrows to 55cm and creates space for the door to open.



PRODUCT OPTIONS

FURNITURE

FITTED OR FREESTYLE?

Flexibility is at the heart of the Concept range and **Concept Space** furniture takes that idea one step further. Many of the new pieces can be combined in any way you choose and have a modular design which allows for mixing pieces from the freestyle and fitted ranges.



Concept Space 50cm Arc short projection semi-countertop basin; compact back-to-wall wc; Simplicity Low Profile 90cm quadrant shower tray, Kubo 90cm quadrant enclosure. Concept Space 600mm wc unit with left hand storage, 600mm fill in unit; 600mm wall unit, 600mm semi-countertop basin unit; 1200 x 300mm worktop (Elm finish). Concept 600mm mirror. Concept Blue basin mixer, Easybox Slim thermostatic shower mixer with round faceplate; Idealrain M3 shower kit.

A PLACE FOR EVERYTHING

If you dream of a beautiful bathroom it probably doesn't include cluttered surfaces. Storage transforms bathrooms and makes a small room look and feel larger. Concept Space basin units tuck two handy drawers into the space beneath the basin.



Concept Space basin units are supplied with a combination of loose internal storage boxes to fill half of the top drawer. Additional boxes are available to customise your storage.

Concept Space 50cm furniture or pedestal basin. Concept Space 500mm basin unit (Elm finish). Concept Blue basin mixer.



The Concept Space tall column unit is just 210mm deep but 1750 high. Glass shelves are included in the full height and there are two individual cupboards – so you can fill one with toiletries and leave the other for less glamorous items.

Concept Space 80cm furniture or pedestal basin; corner wc. Concept Space 800mm basin unit; tall column unit (Dark Walnut finish). Concept 800mm mirror, 600mm towel rail; toilet roll holder with cover, ceramic toothbrush holder. Concept Blue basin mixer.



We've already seen how useful corner products are for planning small spaces. The corner basin unit and mirrored cabinet provide essential storage above and below the basin.



Concept Space includes a new range of mirrored cabinets available in a choice of white or aluminium sides to complement all furniture finishes. You don't need a small bathroom to take advantage of a mirrored cabinet and sizes range from 500mm to 1300mm.



The Concept Space wc unit offsets the wc to the left or right so you don't feel pushed up against the wall. The design includes handy storage in the offset space behind the wc. It's big enough for toilet rolls and cleaning materials and the door can hinged left or right for easy access.



Chrome finish legs are available as an option for all Concept basin units.



The Cube 50cm short projection semi-countertop basin in slimline fitted furniture. 500mm semi-countertop basin unit, wc unit and 300mm base unit; 500mm mirrored cabinet and wall unit (Gloss white finish); worktop (Dark Walnut finish).



This layout uses furniture in a freestyle configuration. Concept Space 550mm basin, unit tall column unit, 600mm top box and fill in unit, in Gloss White finish.



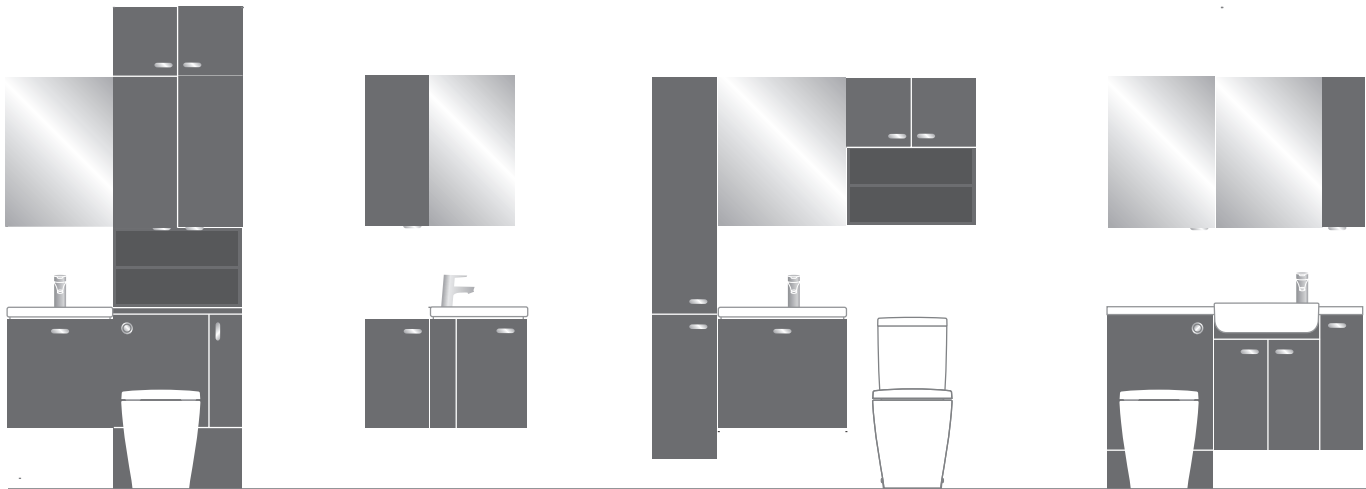
The wall hung Concept Space guest basin unit is left or right handed with L shaped door and storage box inside the door.

Glass tops in grey, brown or white are available for the 200 and 300mm guest basin add on units.

CONCEPT SPACE SAVING FURNITURE

Concept Space furniture configurations:

Here are a few furniture layouts which illustrate the flexibility of the Concept and Concept Space furniture ranges.



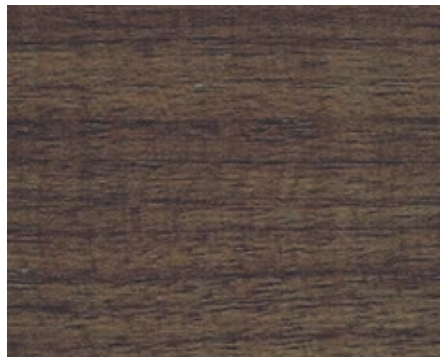
500mm Concept Space basin unit; 600mm Concept Space wc unit with right hand storage, fill in unit, wall unit and top box, 600 x 300mm worktop. 500mm Concept mirror.

450mm Concept Space Guest basin unit (left hand); 300mm add on guest basin unit; 300mm wall unit. 400mm Concept mirror.

Concept Space tall unit; 600mm basin unit, left hand; 600mm fill in unit and top box. 600mm Concept mirror.

Concept slimline 500mm wc unit; 500mm semi-countertop basin unit; 200mm base unit and wall 200mm wall units, 1200 x 210mm worktop. Concept 500mm mirrored cabinet and 500mm mirror.

Concept Space furniture finishes:



Gloss Walnut (KT)



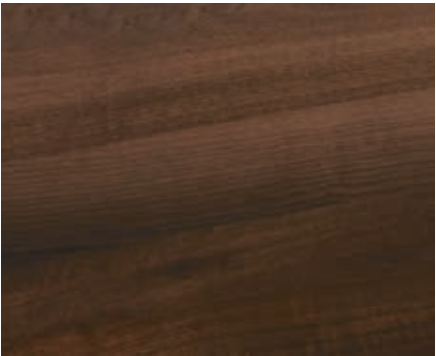
Elm (KS)



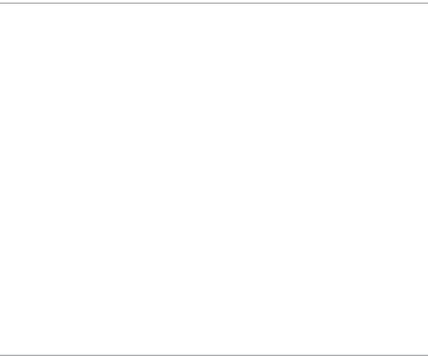
Gloss Grey (KR)



American Oak (SO)



Dark Walnut (SX)



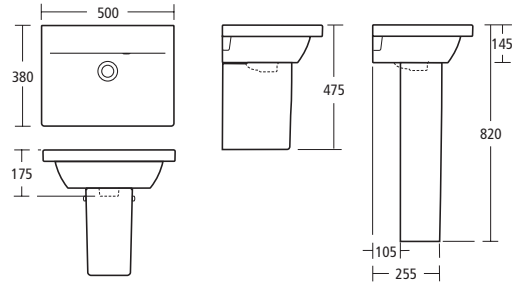
Gloss White (WG)



Concept Space 50 x 38cm
furniture or pedestal basin

Model Ref.
1 tap hole E133601

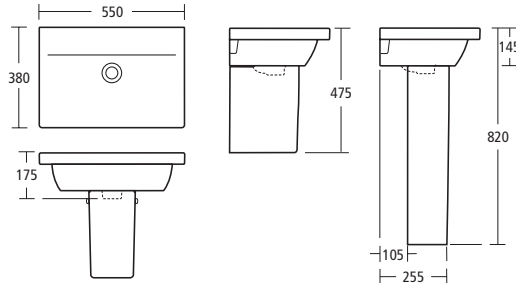
- For use with small full pedestal E783801
- For use with semi pedestal E784001
- For use with furniture basin unit E0325--



Concept Space 55 x 38cm
furniture or pedestal basin

Model Ref.
1 tap hole E133701

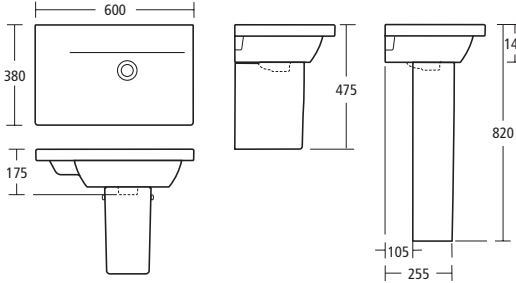
- For use with small full pedestal E783801
- For use with semi pedestal E784001
- For use with furniture basin unit E0326--



Concept Space 60 x 38cm
furniture or pedestal basin with
left hand platform

Model Ref.
1 tap hole E133801

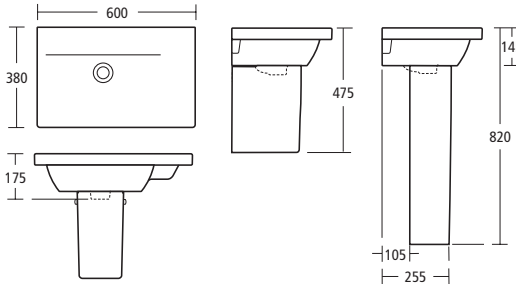
- For use with small full pedestal E783801
- For use with semi pedestal E784001
- For use with furniture basin unit E0327--



Concept Space 60 x 38cm
furniture or pedestal basin with
right hand platform

Model Ref.
1 tap hole E133901

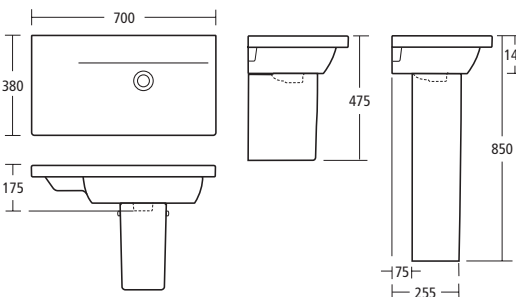
- For use with small full pedestal E783801
- For use with semi pedestal E784001
- For use with furniture basin unit E0354--



Concept Space 70 x 38cm
furniture or pedestal basin with
left hand platform

Model Ref.
1 tap hole E134101

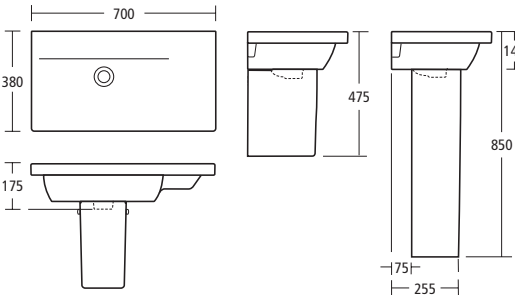
- For use with large full pedestal E783701
- For use with semi-pedestal E784001
- For use with furniture basin unit E0328--



Concept Space 70 x 38cm
furniture or pedestal basin with
right hand platform

Model Ref.
1 tap hole E134201

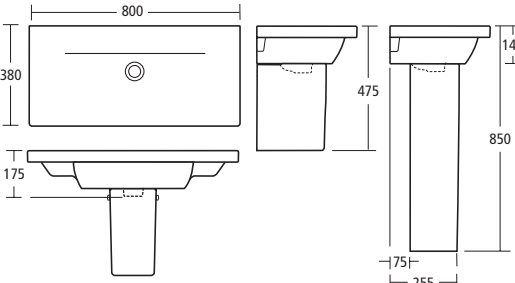
- For use with large full pedestal E783701
- For use with semi-pedestal E784001
- For use with furniture basin unit E0329--



Concept Space 80 x 38cm
furniture or pedestal basin

Model Ref.
1 tap hole E134301

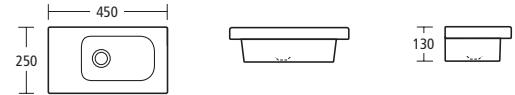
- For use with large full pedestal E783701
- For use with semi-pedestal E784001
- For use with furniture basin unit E0330--



Concept Space 42 x 25cm guest
furniture basin with left hand
platform

Model Ref.
1 tap hole E133501

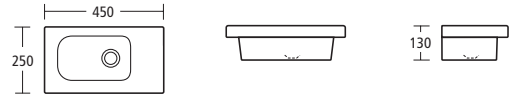
- For use with furniture:
Wall hung guest basin unit E0400
Floor standing guest basin unit E0433



Concept Space 42 x 25cm guest
furniture basin with right hand
platform

Model Ref.
1 tap hole E133401

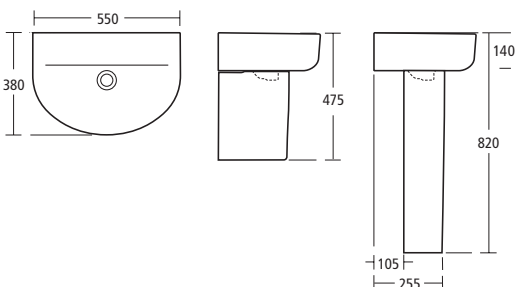
- For use with furniture:
Wall hung guest basin unit E0401
Floor standing guest basin unit E0434



Concept Space 55 x 38cm
Arc short projection basin

Model Ref.
1 tap hole E134501

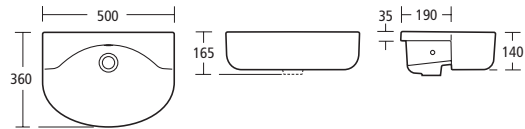
- For use with small full pedestal E783701
- For use with semi pedestal E783901





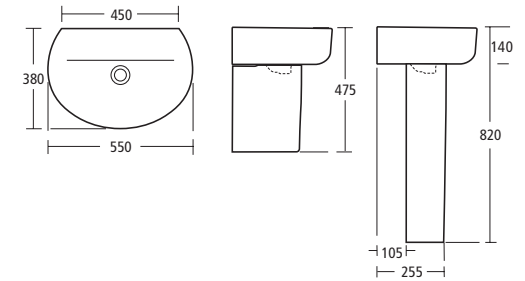
Concept Space Arc 50cm short projection semi-countertop basin

Model	Ref.
1 tap hole (left)	E134401
1 tap hole (right)	E137401
• For use with Concept fitted furniture: 500 / 600 slimline basin units 500 / 600 basin units	



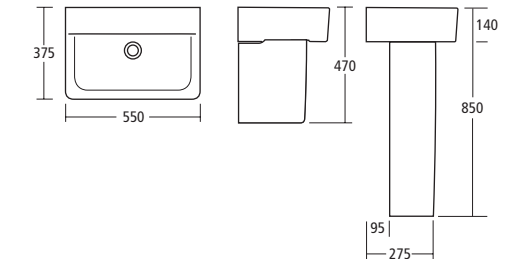
Concept Space 55 x 38cm Sphere short projection basin

Model	Ref.
1 tap hole	E134601
• For use with small full pedestal E783701 • For use with semi pedestal E783901	



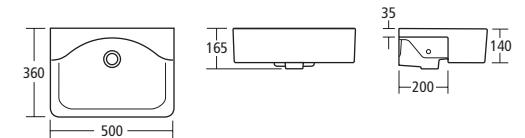
Concept Space Cube 55cm short projection basin

Model	Ref.
1 tap hole	E799201
2 tap holes	E788501
• For use with floor pedestal E783701 • For use with semi pedestal E783901	



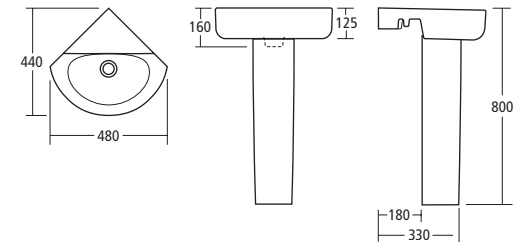
Concept Space 50cm Cube short projection semi-countertop basin

Model	Ref.
1 tap hole (left)	E793301
1 tap hole (right)	E793401
2 tap holes	E793701
• For use with Concept fitted furniture: 500 / 600 slimline basin units 500 / 600 basin units	



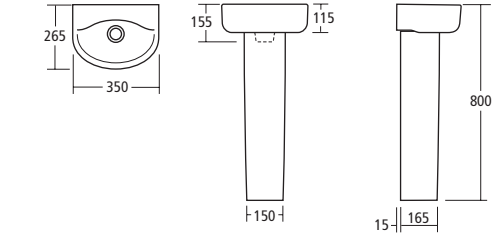
Concept Space Arc 45cm corner basin

Model	Ref.
1 tap hole	E792801
2 tap holes	E792901
• For use with cloakroom pedestal E783801 • For use with Concept corner basin unit E6463--	



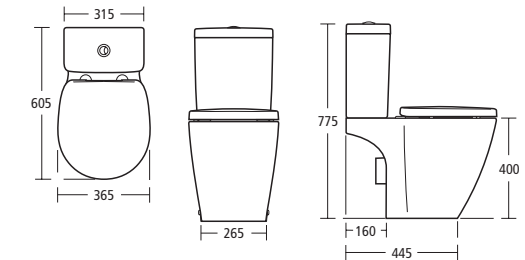
Concept Arc 35cm handrinse basin

Model	Ref.
2 tap holes	E793201
1 tap hole, left hand	E798801
1 tap hole, right hand	E798901
• For use with Concept cloakroom pedestal E783801	



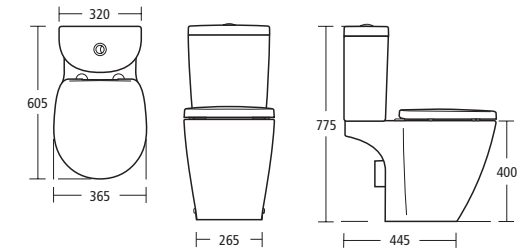
Concept Space Compact Close Coupled WC / Cube Cistern

Model	Ref.
Close coupled WC pan (horizontal outlet)	E120501
Cube cistern with dual flush 6/4 litres	E785901
Cube cistern with dual flush 4/2.6 litres	E796901
Space seat and cover	E129201
Space slow close seat and cover	E129301



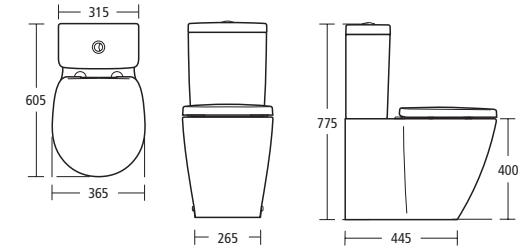
Concept Space Compact Close Coupled WC / Arc Cistern

Model	Ref.
Close coupled WC pan (horizontal outlet)	E120501
Arc cistern with dual flush 6/4 litres	E786001
Arc cistern with dual flush 4/2.6 litres	E785501
Space seat and cover	E129201
Space slow close seat and cover	E129301



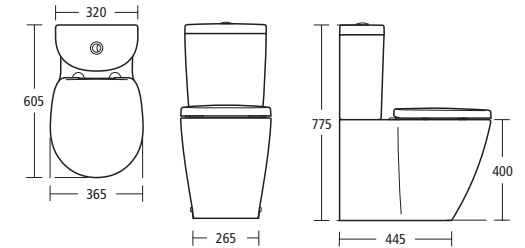
Concept Space Compact Close Coupled back-to-wall WC / Cube Cistern

Model	Ref.
Close coupled WC pan (horizontal outlet)	E120601
Cube cistern with dual flush 6/4 litres	E785901
Cube cistern with dual flush 4/2.6 litres	E796901
Space seat and cover	E129201
Space slow close seat and cover	E129301



Concept Space Compact Close Coupled back-to-wall WC / Arc Cistern

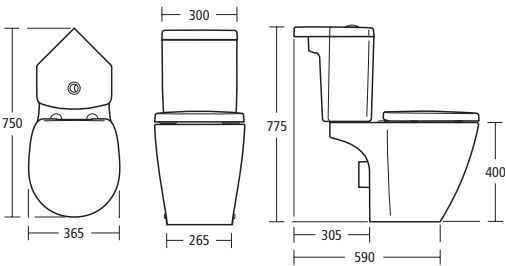
Model	Ref.
Close coupled WC pan (horizontal outlet)	E120601
Arc cistern with dual flush 6/4 litres	E786001
Arc cistern with dual flush 4/2.6 litres	E785501
Space seat and cover	E129201
Space slow close seat and cover	E129301





Concept Space Close Coupled Corner WC

Model	Ref.
Close coupled WC pan (horizontal outlet)	E120501
Corner cistern with dual flush 6/4 litres	E121201
Space seat and cover	E129201
Space slow close seat and cover	E129301



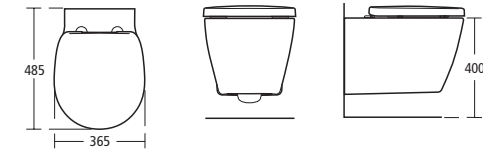
Concept Space Back-to-wall WC

Model	Ref.
Compact back-to-wall bowl	E120801
Space seat and cover	E129201
Space slow close seat and cover	E129301



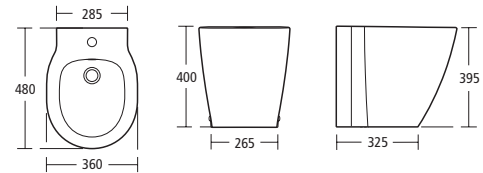
Concept Space Wall Hung WC

Model	Ref.
Compact wall hung bowl	E802501
Space seat and cover	E129201
Space slow close seat and cover	E129301



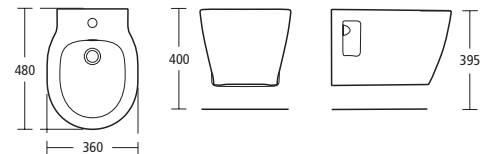
Concept Space Floorstanding Bidet

Model	Ref.
Compact floorstanding back-to-wall bidet	E120901



Concept Space Wall Hung Bidet

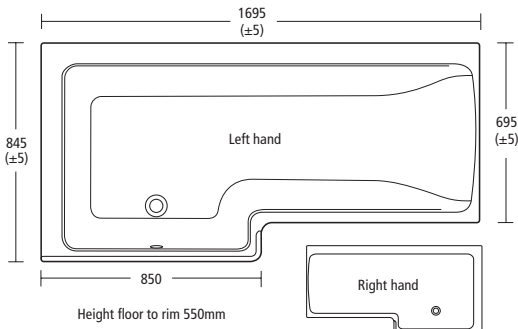
Model	Ref.
Compact wall hung bidet	E121001



Concept 170cm Square Shower Bath

Model (no tapholes)	Ref.
Right hand bath	E051101
Left hand bath	E051201
Idealform Plus+ right hand bath	E049101
Idealform Plus+ left hand bath	E049201
170cm square shower bath front panel	E050401
Unilux 70cm end panel	E316901
Unilux Plus+ 70cm end panel	E050201
Square shower bath screen	E0508EO

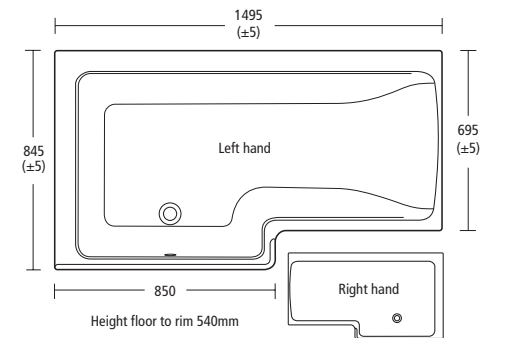
- Left hand bath shown
- For furniture bath panels see page 40



Concept 150cm Square Shower Bath

Model (no tapholes)	Ref.
Right hand bath	E049401
Left hand bath	E049501
Idealform Plus+ right hand bath	E049601
Idealform Plus+ left hand bath	E049701
150cm square shower bath front panel	E050601
Unilux 70cm end panel	E316901
Unilux Plus+ 70cm end panel	E050201
Square shower bath screen	E0508EO

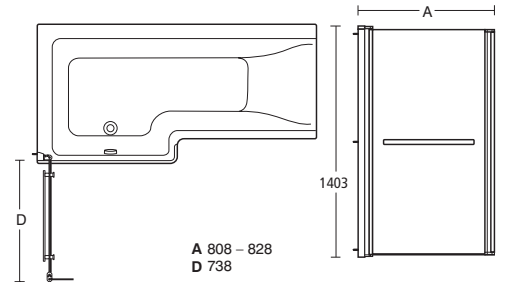
- Left hand bath shown
- For furniture bath panels see page 40



Concept Square Shower Bath Screen

Model	Ref.
Square shower bath screen	E0508EO

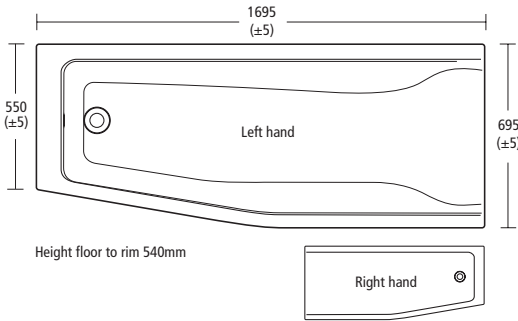
- Fits 150cm and 170cm baths
- Fits left and right hand baths



Concept 170cm Spacemaker Bath

Model (no tapholes)	Ref.
Right hand bath	E049801
Left hand bath	E049901
Spacemaker bath front panel	E050101
Unilux 70cm end panel	E316901
Spacemaker bath 55cm end panel	E050201

- Left hand bath shown



Please add colour reference to code when ordering: Gloss White **WG**, Gloss Grey **KR**, Elm **KS**, Gloss Walnut **KT**, Dark Walnut **SX**, American Oak **SO**.

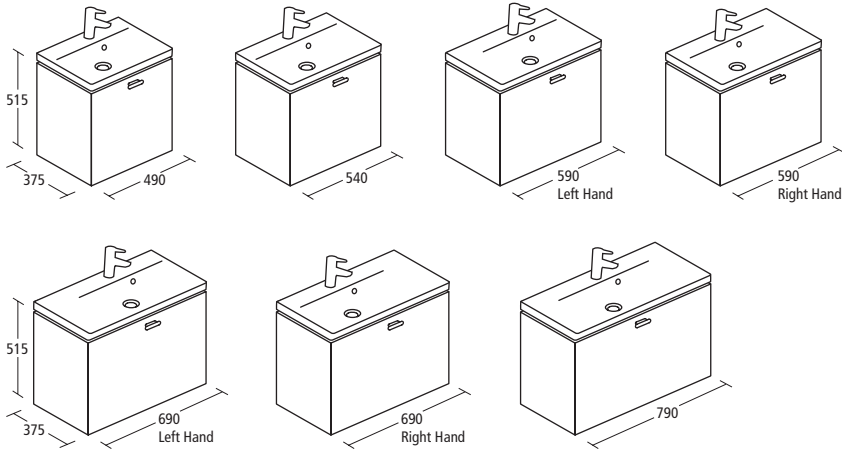


Concept Space wall hung basin units

Model	Space basin	Configuration	Ref.
500mm basin unit	50cm	2 drawers	E0325--
550mm basin unit	55cm	2 drawers	E0326--
600mm basin unit, right hand	60cm, right hand	2 drawers	E0327--
600mm basin unit, left hand	60cm, left hand	2 drawers	E0354--
700mm basin unit, right hand	70cm, right hand	2 drawers, 1 shelf	E0328--
700mm basin unit, left hand	70cm, left hand	2 drawers, 1 shelf	E0329--
800mm basin unit	80cm	2 drawers	E0330--

Mini storage box with cover	W.112 H.72 D.78mm	E035367
Medium storage box	W.157 H.72 D.112mm	E042867
Big storage box	W.230 H.72 D.112mm	E042767

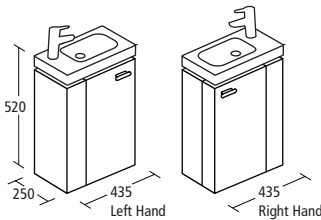
- Space saving waste included with basin units
- Removable storage boxes included with basin units: 1 mini, 1 medium, 1 big



Concept Space 450 x 250mm wall hung Guest basin unit with L shaped door

Model	Ref.
450 x 250mm guest basin unit, left hand	E0400--
450 x 250mm guest basin unit, right hand	E0401--

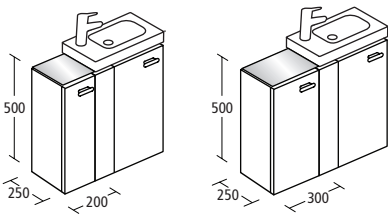
- One internal shelf
- 1 removable storage box included with unit
- For use with 45cm Guest basin



Concept Space add on unit for Guest unit

Model	Ref.
200mm add-on unit	E0402--
200mm glass top for add-on unit	E0393--
300mm add-on unit	E4403--
300mm glass top for add-on unit	E0394--

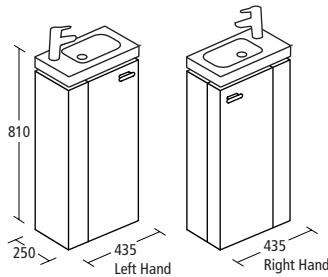
- One internal shelf.
- Specify glass top colour with reference code: White **SA**, Grey **RU**, Brown **RP**.
- Units can be hung left or right opening.



Concept Space 450 x 250mm floor standing Guest basin unit with L shaped door

Model	Ref.
450 x 250mm floor standing guest basin unit, left hand	E0433--
450 x 250mm floor standing guest basin unit, right hand	E0434--

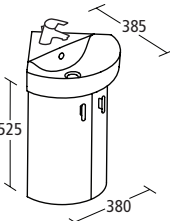
- One internal shelf
- 1 removable storage box included with unit
- For use with 45cm Guest basin



Concept Corner basin unit

Model	Ref.
Corner basin unit, 2 doors, 1 shelf	E6463--

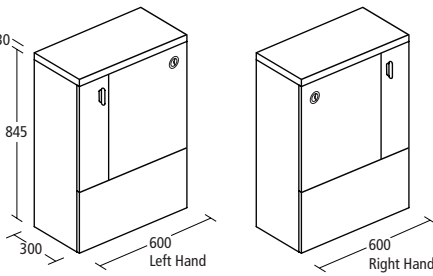
- One internal shelf
- For use with Arc 45cm corner basin



Concept Space WC unit

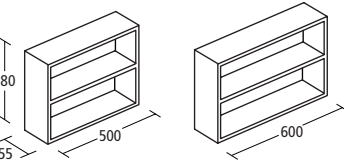
Model	Ref.
WC unit with right hand storage cupboard	E0431--
WC unit with left hand storage cupboard	E0432--

- Includes dual flush cistern 6/4 litre flush and push button
- For use with wall hung and back-to-wall WCs (when using a wall hung WC please specify E006067 floor fixing brackets)
- Choose 300mm deep worktop



Concept Space fill in shelf unit

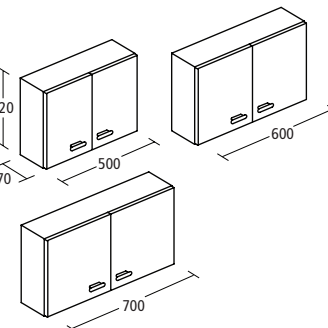
Model	Ref.
500mm fill in shelf unit	E0404--
600mm fill in shelf unit	E0405--



Concept Space top box

Model	Ref.
500mm top box unit with one door	E0406--
600mm top box unit with two doors	E0407--
700mm top box unit with two doors	E0408--

- One internal shelf

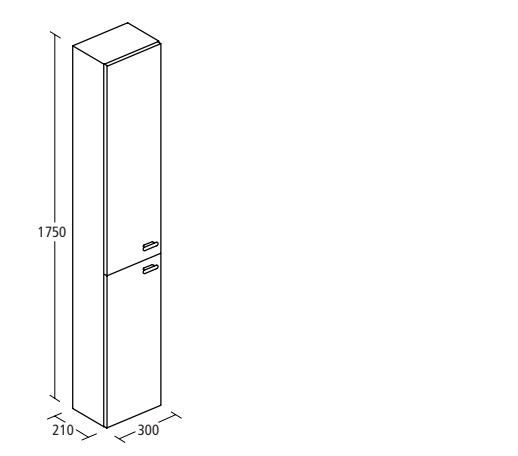


Please add colour reference to code when ordering: Gloss White **WG**, Gloss Grey **KR**, Elm **KS**, Gloss Walnut **KT**, Dark Walnut **SX**, American Oak **SO**.



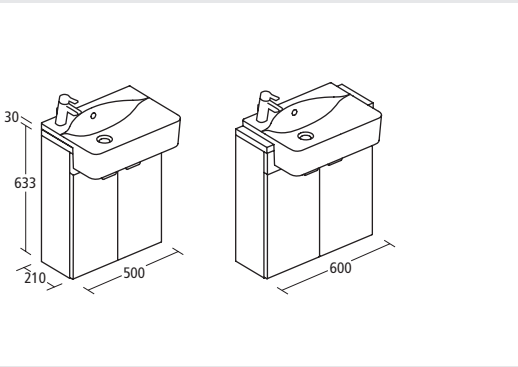
Concept Space tall unit

Model	Ref.
300 x 210mm tall unit with two doors	E0412--
<ul style="list-style-type: none">• 5 internal glass shelves• Units can be left or right opening	



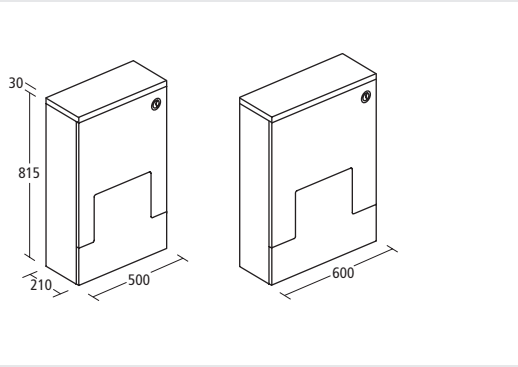
Concept Slimline semi-countertop basin unit

Model	Ref.
500 x 210mm slimline semi-countertop basin unit	E6456--
600 x 210mm slimline semi-countertop basin unit	E6460--
<ul style="list-style-type: none">• One internal shelf• For use with Cube and Arc short projection semi-countertop basins• Choose 210mm deep worktop	



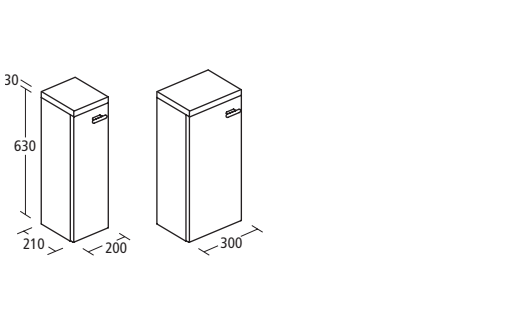
Concept Slimline WC units

Model	Ref.
500 x 210mm WC unit	E6459--
600 x 210mm WC unit	E6461--
<ul style="list-style-type: none">• Includes dual flush cistern 6/4 litre flush and push button• For use with wall hung and back-to-wall WCs (when using a wall hung WC please specify E006067 floor fixing brackets)• Choose 210mm deep worktop	



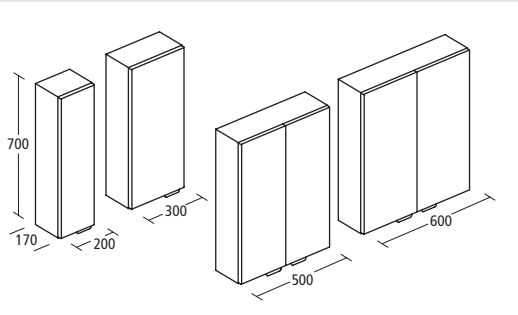
Concept Slimline base units

Model	Ref.
200 x 210mm base unit	E0436--
300 x 210mm base unit	E6462--
<ul style="list-style-type: none">• One internal shelf• Choose 210mm deep worktop	



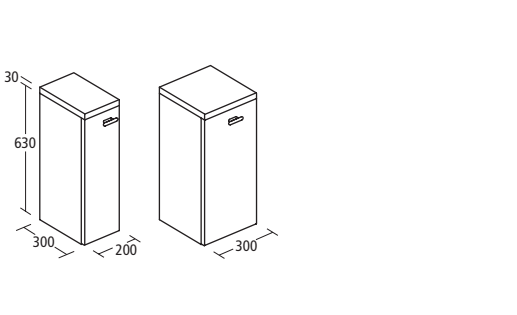
Concept wall units

Model	Ref.
200mm wall unit	E0435--
300mm wall unit	E6462--
500mm wall unit	E6469--
600mm wall unit	E6468--
<ul style="list-style-type: none">• Two internal shelves	



Concept side units

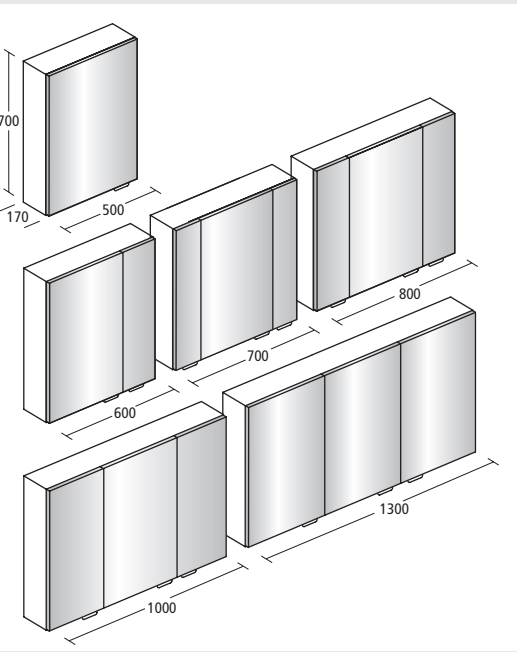
Model	Ref.
200 x 300mm side unit with 1 shelf	E0437--
300 x 300 side unit with laundry basket	E0438--
<ul style="list-style-type: none">• Choose 300mm deep worktop	



Concept mirror cabinets

Model	Ref.
400mm corner mirror cabinet, 1 door*	E6565--
500mm mirror cabinet, 1 door	E0331--
600mm mirror cabinet, 2 doors	E0332--
700mm mirror cabinet, 3 doors	E0333--
800mm mirror cabinet, 3 doors	E0334--
1000mm mirror cabinet, 3 doors	E0335--
1300mm mirror cabinet, 3 doors	E0336--

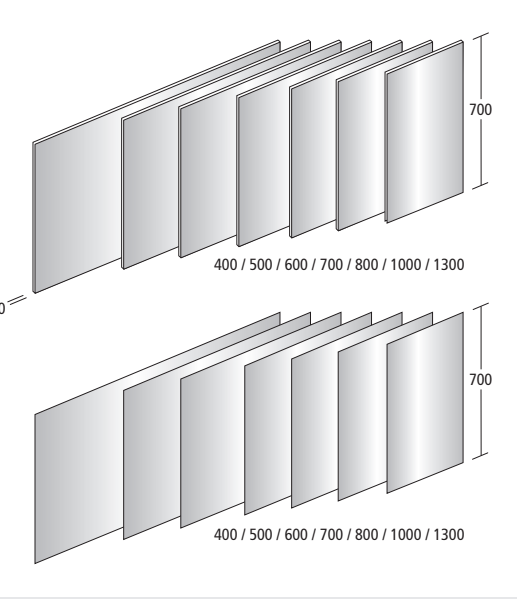
- Two internal glass shelves
- The 400mm corner mirror cabinet is available in all 6 furniture finishes (not aluminium)
- 500–1300mm mirror cabinets are available in a choice of two or finishes: white **WG** or aluminium effect **KP**



Concept mirrors

Model	Ref.
400 x 700 x 20mm mirror	E0413BH
500 x 700 x 20mm anti steam mirror	E0414BH
600 x 700 x 20mm anti steam mirror	E0415BH
700 x 700 x 20mm anti steam mirror	E0416BH
800 x 700 x 20mm anti steam mirror	E0417BH
1000 x 700 x 20mm anti steam mirror	E0418BH
1300 x 700 x 20mm anti steam mirror	E0419BH

400 x 700 x 20mm mirror	E6590BH
500 x 700mm mirror	E6591BH
600 x 700mm mirror	E6593BH
700 x 700mm mirror	E0420BH
800 x 700mm mirror	E0421BH
1000 x 700mm mirror	E6532BH
1300 x 700mm mirror	E6533BH



Concept light fittings

Model	Ref.
354mm external light	E042467
590mm external light	E042567
256mm external halogen light*	E042667

* Not illustrated

TECHNICAL SPECIFICATIONS CONCEPT SPACE FURNITURE

Please add colour reference to code when ordering: Gloss White **WG**, Gloss Grey **KR**, Elm **KS**, Gloss Walnut **KT**, Dark Walnut **SX**, American Oak **SO**.



Square Shower Bath furniture panels

Model	Ref.
170cm square shower bath front panel, right Hand	E0505--
170cm square shower bath front panel, left Hand	E0515--
150cm square shower bath front panel, right Hand	E0507--
150cm square shower bath front panel, left Hand	E0516--
70cm square shower bath end panel	E0532--

Concept worktops

Model	Ref.
300 x 300mm worktop	E6782--
500 x 300mm worktop	E6580--
600 x 300mm worktop	E6581--
1000 x 300mm worktop	E6779--
1200 x 300mm worktop	E6583--
1800 x 300mm worktop	E6584--

300 x 210mm worktop	E6783--
500 x 210mm worktop	E6585--
600 x 210mm worktop	E6586--
1000 x 210mm worktop	E6781--
1200 x 210mm worktop	E6587--
1500 x 210mm worktop	E6588--
1800 x 210mm worktop	E6589--

Concept filler panels

Model	Ref.
WC premium MDF filler panel	E6784--
Wash basin premium MDF filler panel	E6785--
Wall premium MDF filler panel	E6787--
Corner post for fitted ranges	E6761--

Concept plinths

Model	Ref.
600mm premium MDF plinth	E6799--
900mm premium MDF plinth	E6801--
1200mm premium MDF plinth	E6802--
1800mm premium MDF plinth	E6804--

- All plinths suplied with MFC return ends

Concept Space furniture legs

Model	Ref.
Small individual leg, 180mm	E043067
Medium individual leg, 290mm	E044867
Large individual leg, 330mm	E044967

- Use small leg for Concept Cube and Arc/Sphere basin units and fitted furniture basin/base units
- Use medium leg for Concept Space basin units and guest basin/add on units
- Use large leg for Concept Cube vanity basins

Concept Easybox Slim shower valves and shower packs

Model	Ref.
Concept Easybox Slim B1 thermostatic shower mixer with on/off and round faceplate	A5877AA
Concept Easybox Slim B1 thermostatic shower mixer with on/off and square faceplate	A5878AA
Concept Easybox Slim B1 thermostatic bath shower mixer with round faceplate	A5879AA
Concept Easybox Slim B1 thermostatic bath shower mixer with square faceplate	A5880AA
Concept Easybox Slim B1 thermostatic shower pack with round faceplate and Idealrain M3 kit	A5958AA
Concept Easybox Slim B1 thermostatic shower pack with square faceplate and Idealrain M3 kit	A5959AA

Guarantee

Our confidence in the quality and reliability of Ideal Standard products enables us to guarantee many of them for a lifetime. Our guarantee is offered on all products that have been used in the manner for which they were intended, and does not apply to any products that have been misused or abused in any way. Products must be installed and cared for in line with our fixing instructions and local water bye-laws. In the unlikely event the product fails within the guarantee period, we offer a free replacement or replacement part (or nearest equivalent). Liability is limited to individual products and does not cover consequential loss or damage on installation.

1. All ceramic products are guaranteed for a lifetime.
2. Idealcast and Idealform acrylic baths are guaranteed for 25 years from date of purchase.
3. Showers, bath panels, furniture, mixers and taps, WC suite seats and cistern fittings are guaranteed for five years from date of purchase. (Cistern and shower door seals are not included. Replacements can be found on our Fastpart website: www.fastpart-spares.co.uk).
4. Shower enclosures and bath screens are guaranteed for ten years and shower trays for 25 years.
5. Parts (including push button flush valves and blower power packs on Whirlpool baths) are guaranteed for five years and will be replaced if found to be faulty.
6. Cistern diaphragms, seals and shower seals are not included. Replacements may be purchased through our parts supply service.
7. When your bathroom has been satisfactorily installed and is working well, please ensure you register your guarantee.
8. The guarantee is transferable 'it applies to the product not the purchaser' provided guarantee registration details are passed on to the new owner.

For full conditions please refer to our website: www.ideal-standard.co.uk/guarantee.aspx

Ideal Standard pursues a policy of continuing improvement in design and performance of its products. The right is therefore reserved to vary specifications without notice. While great care has been taken to ensure accuracy of all prices, product codes, descriptions and dimensions, Ideal Standard reserves the right to correct errors or misprints. Colour reproduction is accurate as possible within the limitations of the printing process.

Design by Broadbase

Ideal Standard (UK) Ltd P1700 04/13

Concept Space is the latest addition to Ideal Standard’s innovative and extensive **Concept range**. For the full range pick up a copy of the Essentials brochure or download one at www.ideal-standard.co.uk. Our website also includes an online bathroom planning tool to help you design your own beautiful space.



Concept Space 55cm furniture or pedestal basin with semi-pedestal. Concept 550mm mirror; glass soap dish; towel ring. Concept Blue basin mixer.

For further information or comments
on any of the Concept range or any
Ideal Standard products please contact:

Ideal Standard

The Bathroom Works
National Avenue
Kingston Upon Hull
HU5 4HS

Tel: 01482 346461

Fax: 01482 445886

www.idealstandard.co.uk

Ideal Standard

2nd Floor,
3013 Lake Drive,
Citywest Campus,
Dublin 24

Tel: 00353 1 4564525

Fax: 00353 1 4564505

www.idealstandard.ie



A
BEAUTIFUL
USE
OF
SPACE